



**Community
Connectors**

Chippenham

*Supporting people to
protect and improve
their local river and
environment*

Inside:

*A handy map showing
great things to do in
and around Chippenham*

Fun Chippenham facts

*Information on how you
can save water and
protect the
environment*



Wessex Water
YTL GROUP

FOR YOU. FOR LIFE.

Hello, Hello, have you ever wondered about the water that is around us everywhere? Read on and discover how water is collected and used in our town, and how you can do your bit to help the environment.




Did you know?

Chippenham was established as an important crossing point of the river Avon, and means *'market on the river meadow'*

The name Avon comes from the Welsh word for river 'Afon'

The river Avon is 120km long and it is one of the 20 longest rivers in the UK. It flows through Bath and Bristol into the Severn estuary

There is more than one River Avon, can you find any of the others?



The Water Safety Code



Stop and think - spot the dangers



Stay together



Call **999** or **112**



In an emergency - **float**

Water - a precious resource

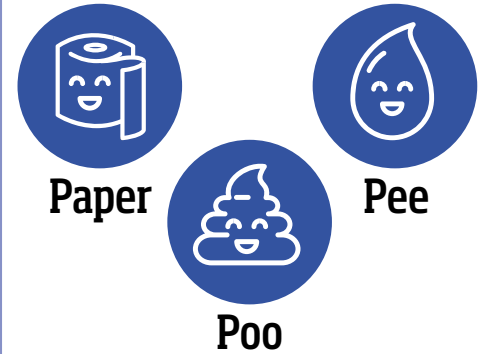
Water is precious, so it's important not to waste it. You can do your bit by making sure you only use what you need. Here are our **TOP TIPS FOR SAVING WATER**:

- Turn the tap off** when you brush your teeth. 
- Use a shower timer** to spend a minute less in shower. 
- Refill a water bottle** from the tap instead of buying water. 
- Save rainwater** to water your garden or houseplants, or try growing your own herbs in small pots. 
- Only use** the washing machine or dishwasher with a full load. 



in your bathroom

To keep your home blockage free, only flush **the three Ps**:



We are working with local groups in Chippenham through the Community Connectors project, including **Wiltshire Wildlife Trust**, **Chippenham Sailing & Canoeing Club** and the **Environment Agency**.



The Wessex Water Community Connectors project aims to change the way we work with communities in our region. It is important we improve the environment and support local people.

Find out more at wessexwater.co.uk/visit-and-learn/community-connectors

↓ *For your grown-ups*

Talk to us if you need help to pay your bills

Don't worry if you're struggling to pay, talk to us today. We offer:

- Payment breaks
- Flexible payment plan
- Water Direct - using benefits payments
- Discount for low-income pensioners
- WaterSure - bill cap scheme
- Assist - reduced bill
- Restart - debt support scheme

Visit [wessexwater.co.uk/help-to-pay](https://www.wessexwater.co.uk/help-to-pay) or call us on 0345 600 3 600.

Extra support when you need it

If you or anyone you know needs extra support, we can help through **Priority Services**:

- help if your supply gets interrupted
- help finding and reading your meter
- bills and leaflets in braille, large print or other languages
- a password to protect against scam house calls.

It's free and easy to register today at [wessexwater.co.uk/priority-services](https://www.wessexwater.co.uk/priority-services) or call 0345 600 3 600.



Take a look at our **free-to-use** tool to help you save money on your water bills, claim free water saving devices for your home and raise money for local charities.

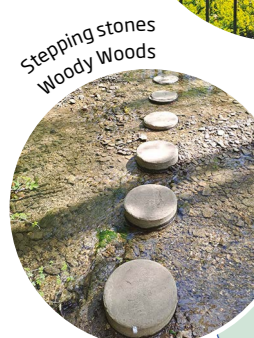
Try it out at [wessexwater.co.uk/getwaterfit](https://www.wessexwater.co.uk/getwaterfit)



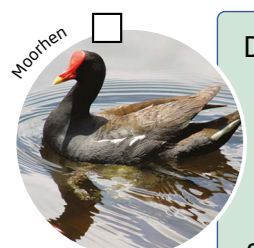
Did you know that there are lots of things to learn and places to see in Chippenham?



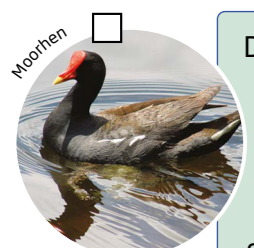
Splash pad



The old fountain



Stepping stones
Woody Woods



Moorhen

Can you find your school on the map?

Hardenhuish reservoir is where we store water, although you can't see this as it is covered. The water is cleaned before it comes through to your taps.

John Coles Park. Playing with water is fun, especially in the summer at the splash pad.
Can you find the old fountain?

At the Donkey Field and 'Woody Woods' you can see one of the tributaries of the Avon here, Hardenhuish Brook. It's a good spot for a welly walk.

Derriads Pond has been here for at least 900 years. You might see some ducks, moorhens or other wildlife. The marshy dip next to the pond stores excess rainwater to stop the natural pond being flooded during heavy storms.

Tick the box when you see any of these

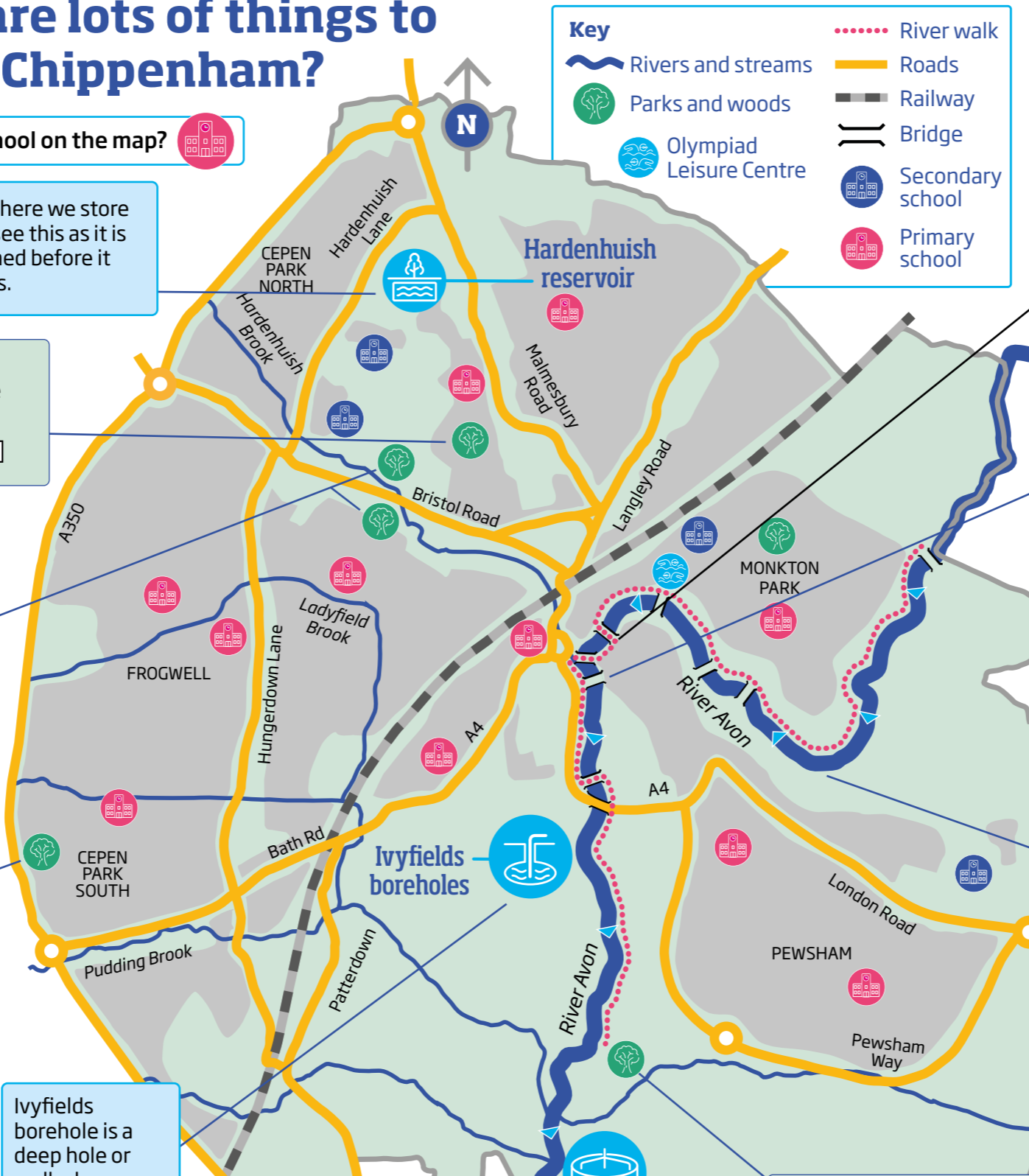
 Otter <input type="checkbox"/>	 Water vole <input type="checkbox"/>	 Grey squirrel <input type="checkbox"/>
 Kingfisher <input type="checkbox"/>	 Canada goose <input type="checkbox"/>	 Swan <input type="checkbox"/>
 Damselfly <input type="checkbox"/>	 Butterfly <input type="checkbox"/>	 Alder tree <input type="checkbox"/>
	 Willow tree <input type="checkbox"/>	

Ivyfields borehole is a deep hole or well where we collect water from underground.
Did you know? - Chippenham homes use 5 million litres per day, equivalent to 14.5 Olympiad swimming pools EVERY DAY!

The water recycling centre 'Blackwell Hams', is where your wastewater is collected once it goes down the plug hole. During dry weather, about 7 million litres (or 20 Olympiad swimming pools) is cleaned every day and put back into the river. This increases to almost 23 million litres per day (more than 60 Olympiads) during wet weather.

Key

- Rivers and streams
- Parks and woods
- Olympiad Leisure Centre
- River walk
- Roads
- Railway
- Bridge
- Secondary school
- Primary school



River Walk
Starting at the town bridge you can walk all the way along the river to the observation platform at Blackbridge. You might see swans, Canada geese, kingfishers or even otters if you are very lucky. Wessex Water Guardian volunteers work with Wiltshire Wildlife Trust and the Environment Agency to look after the river.



Blackbridge viewing platform

The Chippenham radial gate and weir was constructed to control and maintain a constant upstream river level through Monkton Park and the town centre. It is a type of dam. The weir has a pass to allow fish to safely move along the river. The gate is coming to the end of its working life and the Environment Agency is looking at options for replacing it and improving the landscape to benefit people, the river and wildlife.
What would you put here? Do you think the river should be dammed?



You can learn how to be safe and have fun on the water at the Sailing & Canoeing Club.



You can walk downstream, past the Millennium Wall and The Arc climbing centre to the Westmead Open Space, where there is a trail of wooden animal sculptures. **How many can you find?**
The path takes you on past Mortimores ancient wood and out of Chippenham towards the Wilts & Berks canal.

Tick the box once you've seen these sculptures

